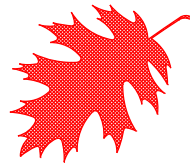
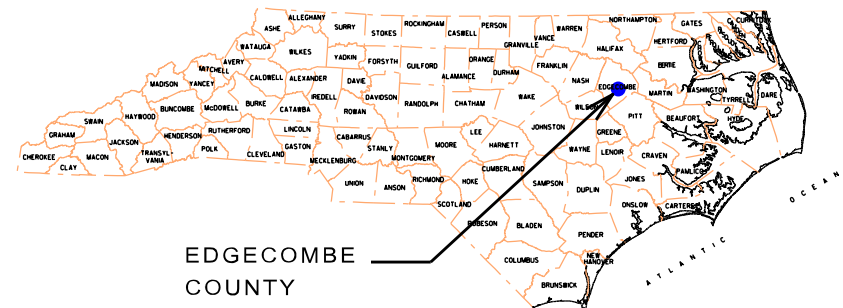
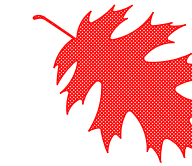


PROJECT: US 64 - EDGECOMBE COUNTY



HIGHWAY LANDSCAPE DEVELOPMENT PROJECT

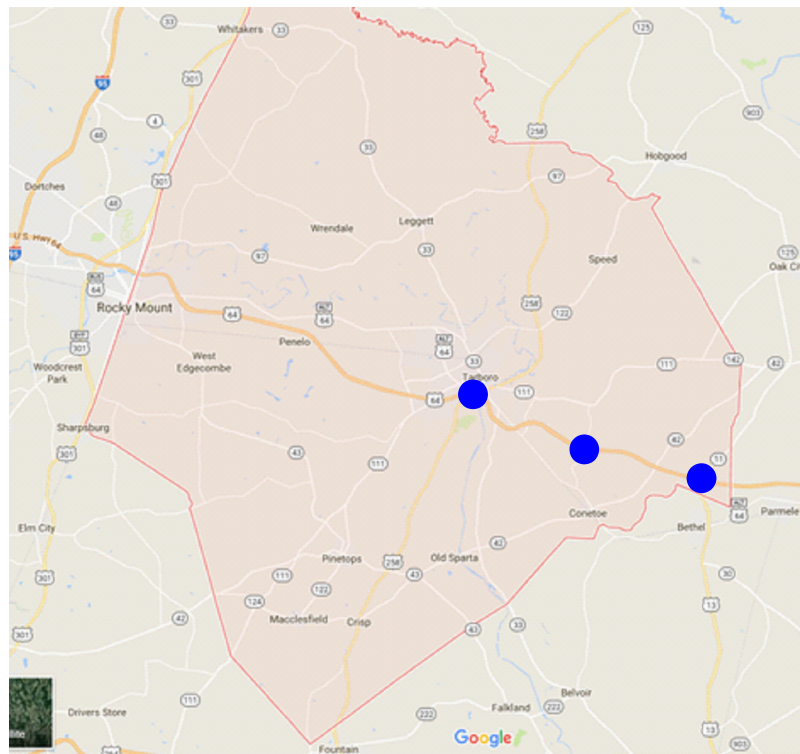


EDGECOMBE COUNTY LANDSCAPE ENHANCEMENT

LOCATION: US 64 NEAR TARBORO NC
TYPE OF WORK: Landscape Enhancements

SUMMARY OF QUANTITIES

● PROJECT LOCATION(S)



| Quan | Key | Unit | Common Name | Botanical Name | Spacing | Notes |
|-------|-----|------|----------------------------|---------------------------------|-----------|-------------|
| 204 | INR | Ea | Nellie R Stevens Holly | Ilex x 'Nellie R. Stevens' | 8' O.C. | 6-8', B&B |
| 32 | PK | Ea | Kwanzan Cherry | Prunus serrulata 'Kwanzan' | 9' O.C. | 6-8', B&B |
| 1 | QN | Ea | Nuttall Oak | Quercus nuttali | as shown | 10-12', B&B |
| 20 | QP | Ea | Pin Oak | Quercus palustris | as shown | 8-10', B&B |
| 14 | TGG | Ea | Green Giant Arborvitae | Thuja 'Green Giant' | 9' O.C. | 6-8', B&B |
| 501 | EBB | Ea | Dwarf Burning Bush | Euonymus alata 'Compacta' | 7' O.C. | #3 Cont |
| 31 | IDY | Ea | Dwarf Yaupon Holly | Ilex vomitoria 'Nana' | 3' O.C. | #3 Cont |
| 16 | LR | Ea | Ruby Loropetalum | Loropetalum chinense 'Ruby' | 3.5' O.C. | #3 Cont |
| 73 | RKO | Ea | Red Knockout Rose | Rosa 'Radrazz' | 4' O.C. | #3 Cont |
| 50 | LCY | Ea | Chapel Hill Yellow Lantana | Lantana 'Chapel Hill' | 3' O.C. | #1 Cont |
| 236 | PCN | Ea | Cloud Nine Switchgrass | Panicum virgatum 'Cloud Nine' | 3' O.C. | #1 Cont |
| 496 | HBP | Ea | Buttered Popcorn Daylily | Hemerocallis 'Buttered Popcorn' | 30" O.C. | #1 Cont |
| 1380 | | CY | Mulch for Planting | | | |
| 10000 | | SY | Pre-emergent Herbicide | | | |
| 10000 | | SY | Post-emergent Herbicides | | | |
| 100 | | M/G | Water | | | |
| 1 | | LS | Trim Loropetalum | | | |
| 13713 | | SF | Daylily Bed Revitalization | | | |
| 4229 | | LF | Natural Area Edging | | | |
| 65 | | EA | Trim Trees | | | |
| 50 | | EA | Remove Dead/Dying Pines | | | |
| 68 | | CY | Topsoil | | | |
| 30 | | Ton | Rip Rap, Class B | | | |
| 120 | | CY | Fill Soil | | | |
| 1.2 | | ACR | Fertilizing Plant Beds | 4#/1000SF | | |
| 1 | | LS | Site Grading | | | |
| 70 | | Ton | Rip Rap Retaining Wall | | | |
| 1 | | Ton | Rip Rap, Class A | | | |
| 18 | | EA | Monthly Warranty Work | | | |

| T.I.P. # | STATE PROJECT W.B.S. # | SHEET # | SHEET # TOTAL |
|--------------|------------------------|----------|---------------|
| - | 0000.00.0 | L 1 | 5 |
| FED. PROJ. # | DESCRIPTION | DIVISION | |
| - | ENHANCEMENT | 4 | |

CONVENTIONAL SYMBOLS

| | |
|---|-------|
| County Line | --- |
| City or Town Line | ---- |
| Exist. Right of Way Line Marker | —▲— |
| Prop. Right of Way Line Marker (By Others) | —▲— |
| Prop Right of Way Line Marker (By Contract) | —▲— |
| Exist. Control of Access Line | —(+)— |
| Prop. Control of Access Line | —(+)— |
| Property Line | —●— |
| Easement Line | —○— |
| Slope Stake Line | —x— |
| Exist. Fence | — — |
| Prop. Woven Wire Fence | —x— |
| Prop. Chain Link Fence | —o— |
| Exist. Road | —=— |
| Prop. Road | —=— |
| Guardrail | — — |
| Survey Line | —x— |
| Denotes Line Equality | —●— |
| Bridge | —=— |
| Culvert | —x— |
| Railroad | — — |
| Woods | —x— |
| Exist. Telephone Pole | —●— |
| Prop. Telephone Pole | —○— |
| Tower Pole and Line | —x— |
| Exist. Power Pole | —●— |
| Prop. Power Pole | —○— |
| Sanitary Sewer Line | —x— |
| Water Line | —w— |
| Gas Line | —g— |
| Structure | — — |
| Regeneration | —x— |
| Reforestation | —x— |

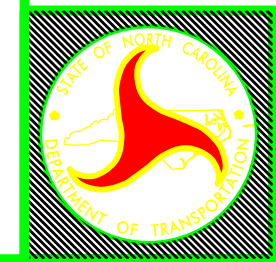
INDEX OF L SHEETS:

L 1 ... TITLE, DESCRIPTION, LOCATION
L 2 ... PLANTING DETAILS
L 3 ... NC 258 INTERCHANGE PLAN, RIP RAP RAISED BED DETAILS
L 4 ... CHINQUAPIN INTERCHANGE PLAN
L 5 ... US 13 INTERCHANGE PLAN

PREPARED BY: BK DATE: 10/2017

REVISIONS

| DATE | DESCRIPTION |
|------|-------------|
| | |
| | |
| | |



STATE OF
NORTH CAROLINA
DEPARTMENT OF TRANSPORTATION

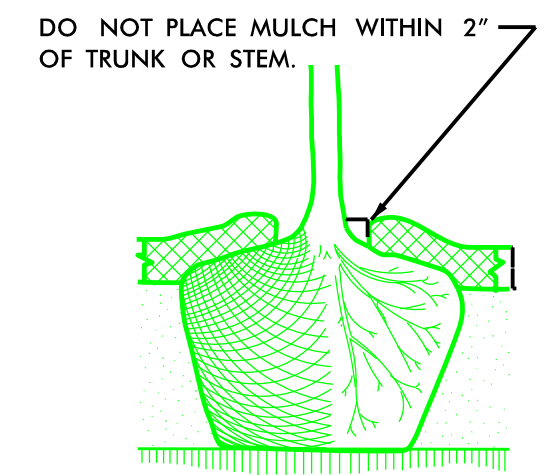
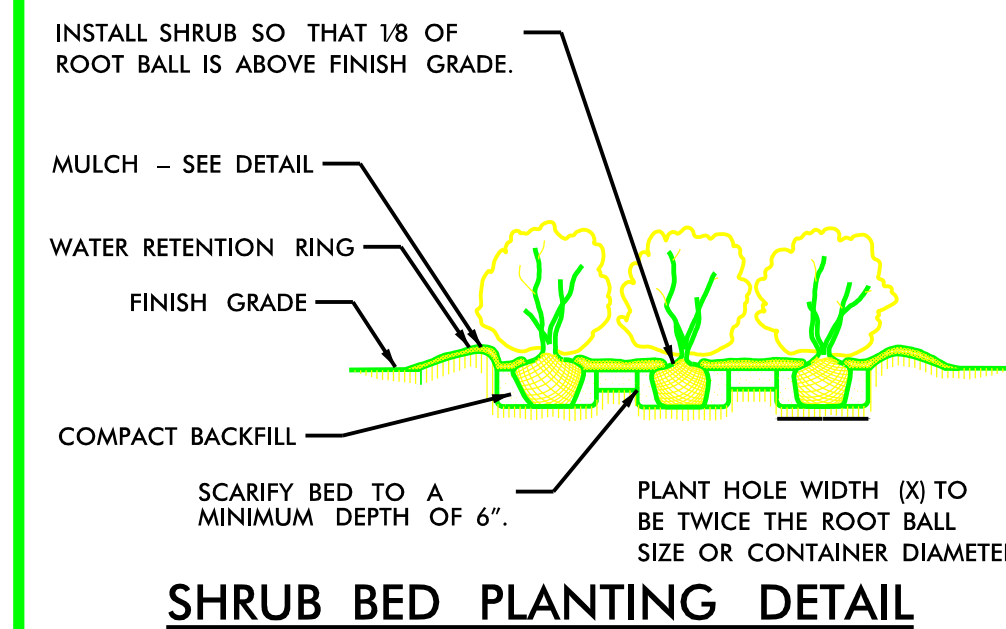
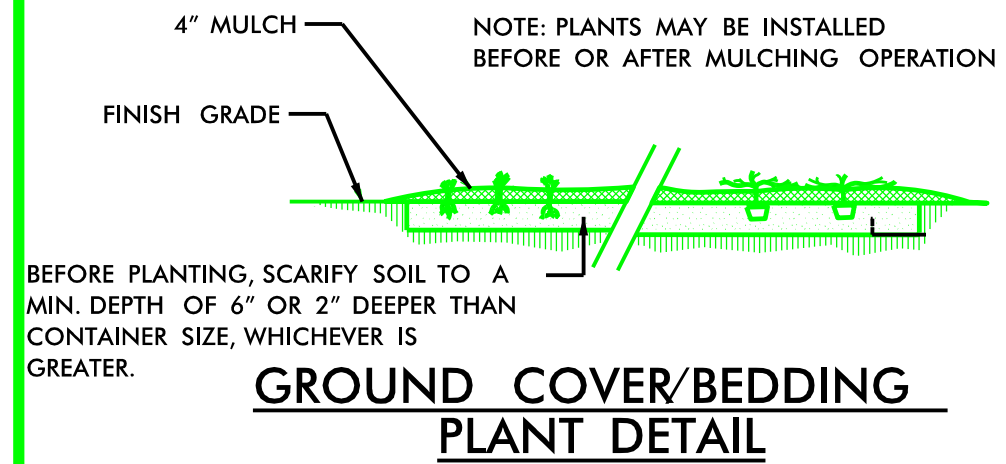
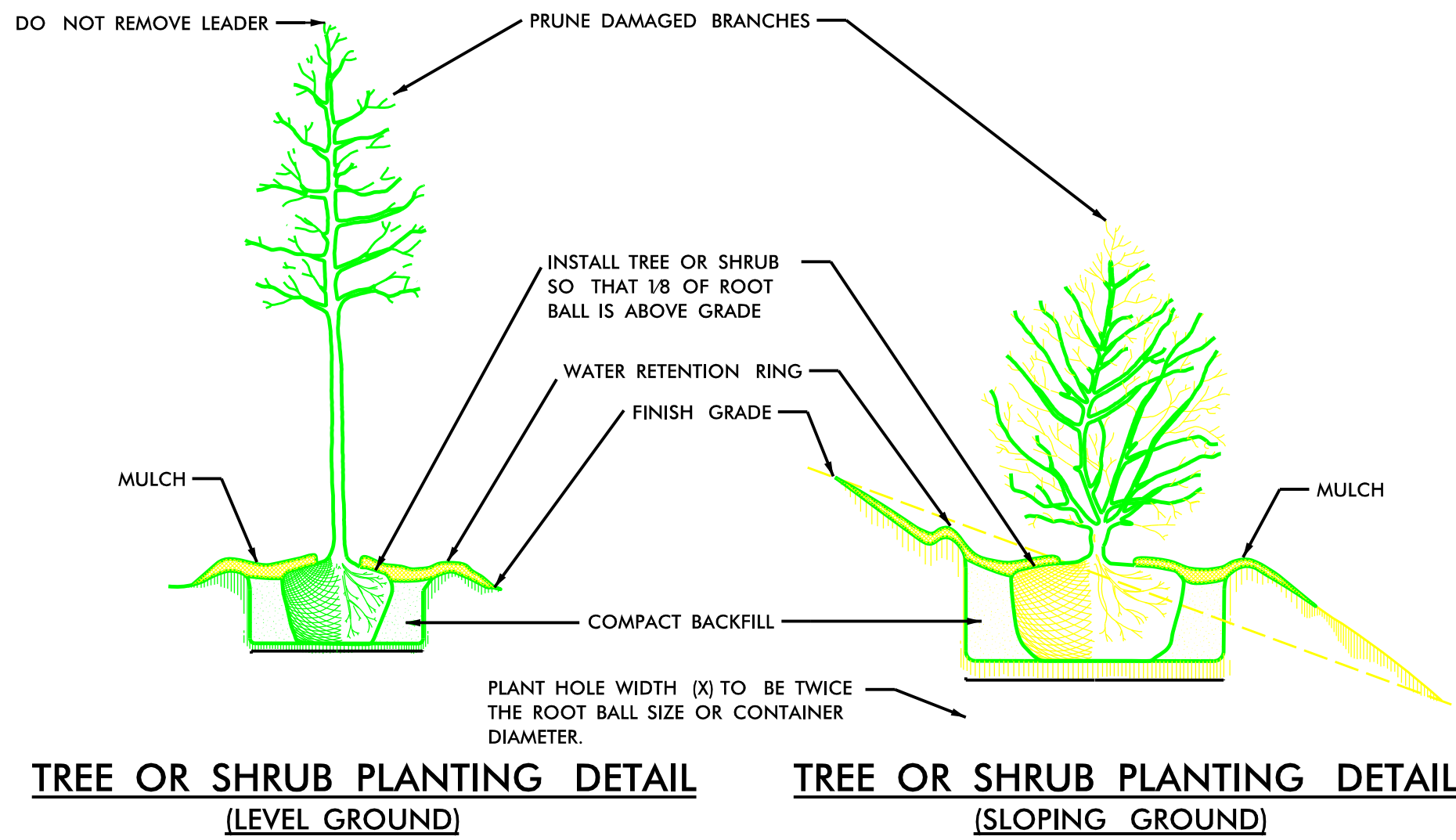
LOCATION: US64 NEAR TARBORO NC

TYPE OF WORK: Highway Landscape Enhancements

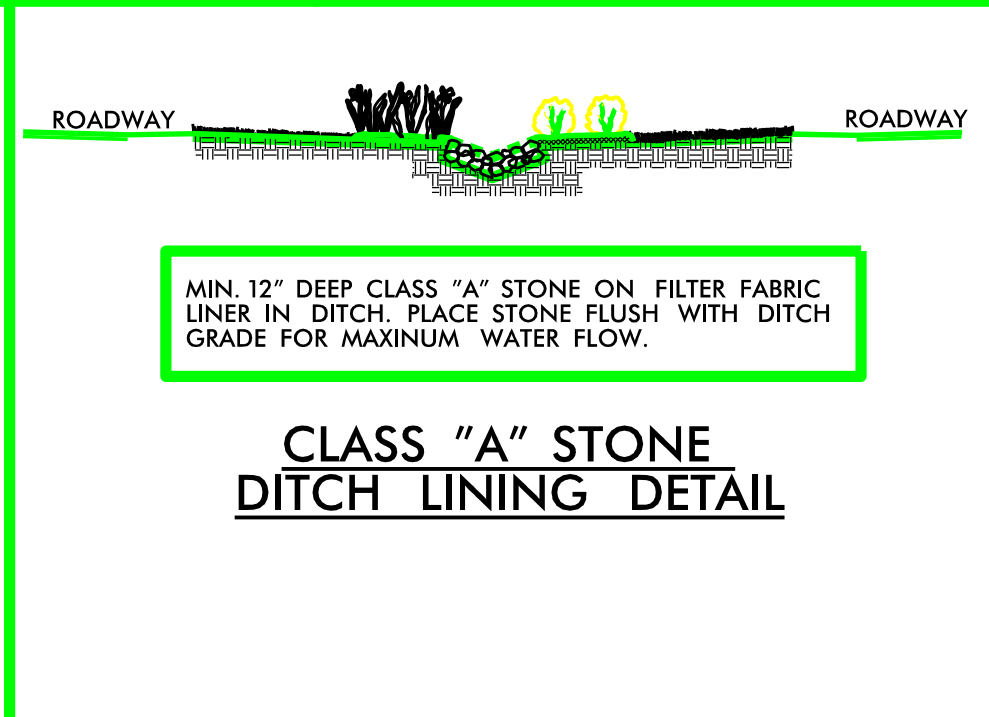
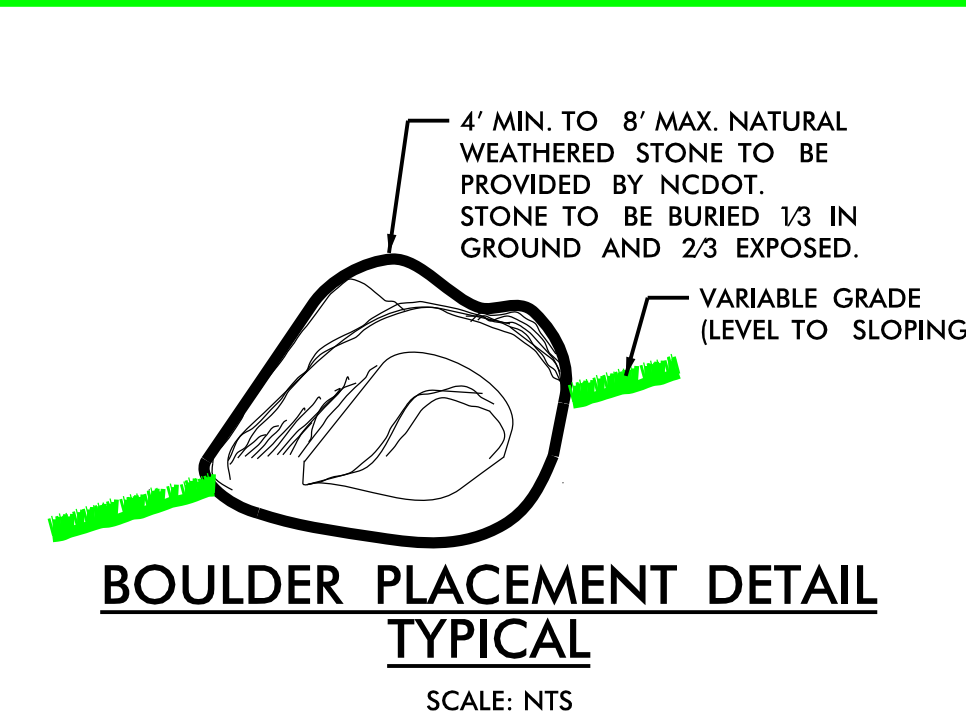
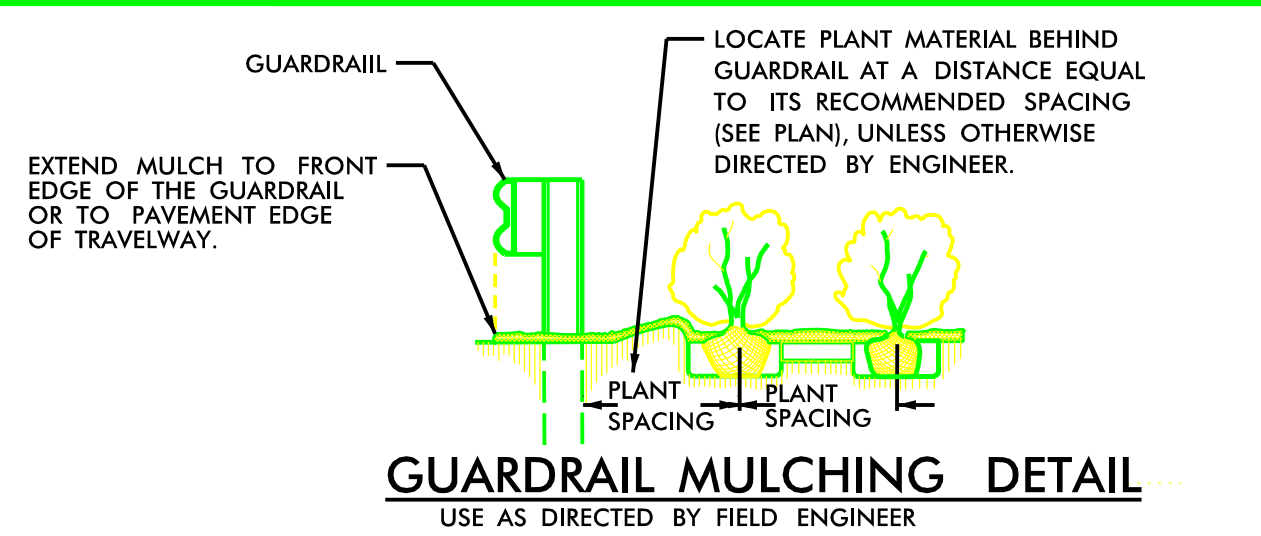
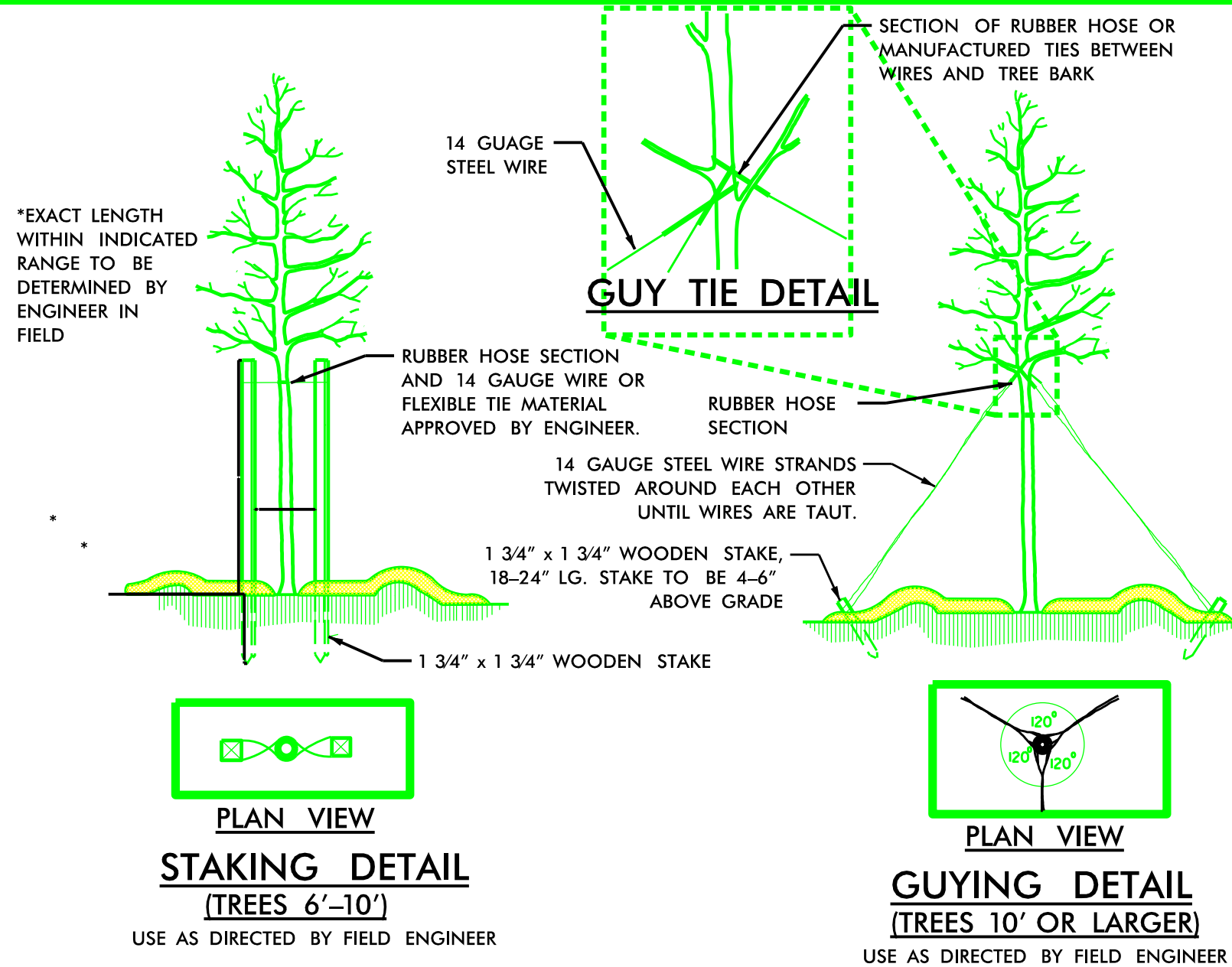
COUNTY: EDGECOMBE COUNTY

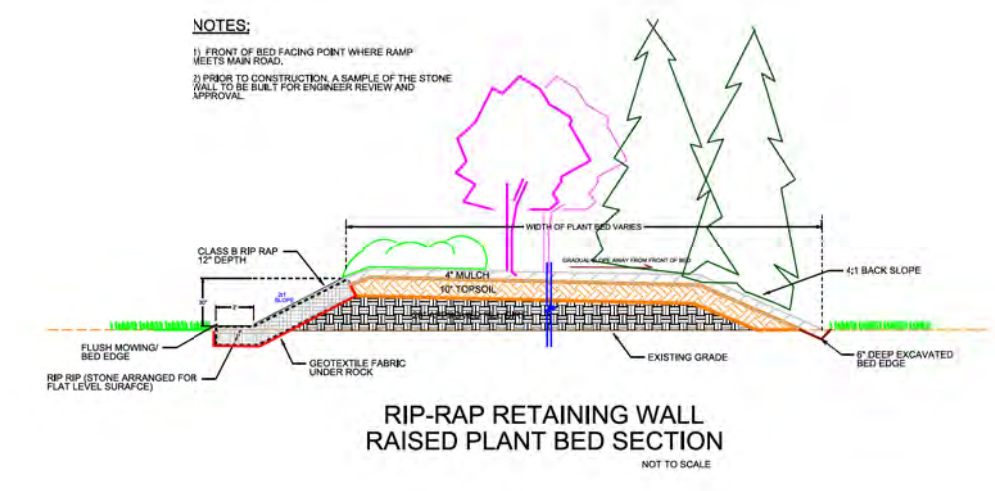
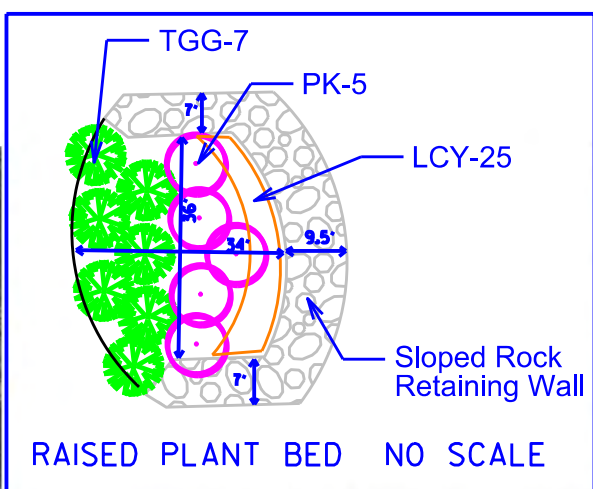
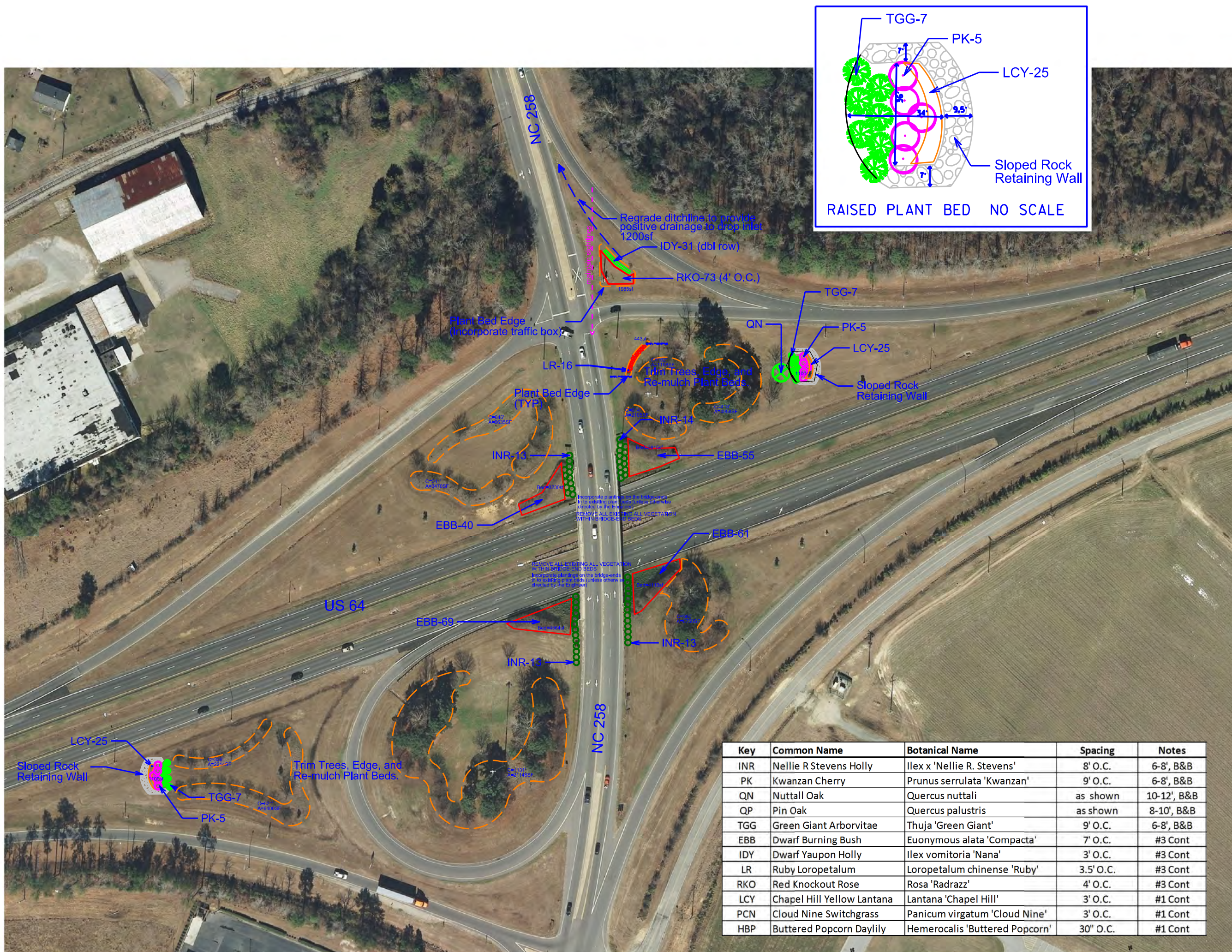
2014 American Standard for Nursery Stock
2012 NCDOT STANDARD SPECIFICATIONS
PREPARED IN THE OFFICE OF:
NCDOT- ROADSIDE ENVIRONMENTAL UNIT
LANDSCAPE DESIGN & DEVELOPMENT SECTION
1557 MAIL SERVICE CENTER
RALEIGH NC 27699 919-707-2920

\$\$\$\$\$SYTIME\$\$\$\$\$
\$\$\$\$\$SYTIME\$\$\$\$\$
\$\$\$\$\$SYTIME\$\$\$\$\$
\$\$\$\$\$SYTIME\$\$\$\$\$
\$\$\$\$\$SYTIME\$\$\$\$\$



- NOTES:**
- SCHEDULE FOR PLANT HOLE SIZE: PLANT HOLE WIDTH (X) TO BE TWICE THE ROOT BALL SIZE OR CONTAINER DIAMETER.
 - SEE STANDARD SPECIFICATIONS FOR PLANT BED FUMIGATION AND HERBICIDAL TREATMENT.
 - APPLY FERTILIZER AT PLANTING TIME IN THE FORM OF A SLOW RELEASE PELLET OR TABLET. APPLY AT RATE RECOMMENDED BY MANUFACTURER. BOTH RATE AND FORMULATION MUST BE APPROVED BY FIELD ENGINEER PRIOR TO APPLICATION.
 - REMOVE WIRE BASKET AND FOLD BURLAP BACK FROM TOP OF ROOT BALL BEFORE BACKFILLING IS COMPLETE.
 - ALL PRUNING TO FOLLOW STANDARD ARBORICULTURAL PRACTICES AS SPECIFIED BY INTERNATIONAL SOCIETY OF ARBORICULTURE.
 - DO NOT ATTEMPT TO STRAIGHTEN A TREE THAT HAS BEEN PLANTED AT AN ANGLE WITH THE USE OF STAKING OR GUYING. DIG TREE AND REPLANT TO UPRIGHT POSITION.



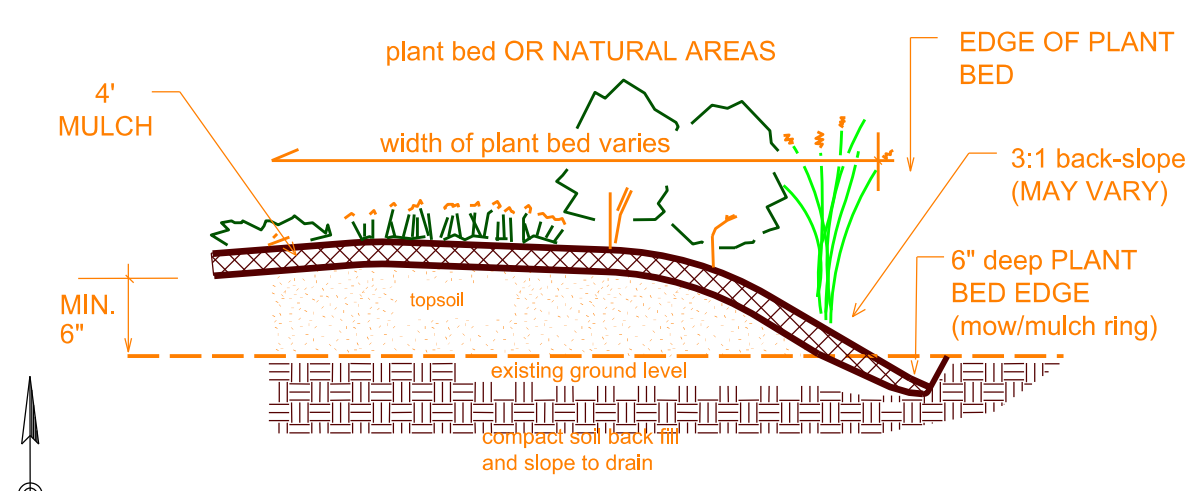


RIP RAP RETAINING WALL DETAIL NO SCALE

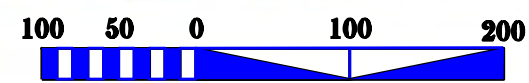


SAMPLE IMAGE OF RAISED RIP RAP BED

| Key | Common Name | Botanical Name | Spacing | Notes |
|-----|----------------------------|---------------------------------|-----------|-------------|
| INR | Nellie R Stevens Holly | Ilex x 'Nellie R. Stevens' | 8' O.C. | 6-8', B&B |
| PK | Kwanzan Cherry | Prunus serrulata 'Kwanzan' | 9' O.C. | 6-8', B&B |
| QN | Nuttall Oak | Quercus nuttali | as shown | 10-12', B&B |
| QP | Pin Oak | Quercus palustris | as shown | 8-10', B&B |
| TGG | Green Giant Arborvitae | Thuja 'Green Giant' | 9' O.C. | 6-8', B&B |
| EBB | Dwarf Burning Bush | Euonymus alata 'Compacta' | 7' O.C. | #3 Cont |
| IDY | Dwarf Yaupon Holly | Ilex vomitoria 'Nana' | 3' O.C. | #3 Cont |
| LR | Ruby Loropetalum | Loropetalum chinense 'Ruby' | 3.5' O.C. | #3 Cont |
| RKO | Red Knockout Rose | Rosa 'Radrazz' | 4' O.C. | #3 Cont |
| LCY | Chapel Hill Yellow Lantana | Lantana 'Chapel Hill' | 3' O.C. | #1 Cont |
| PCN | Cloud Nine Switchgrass | Panicum virgatum 'Cloud Nine' | 3' O.C. | #1 Cont |
| HBP | Buttered Popcorn Daylily | Hemerocallis 'Buttered Popcorn' | 30" O.C. | #1 Cont |



PLANT BED EDGE DETAIL



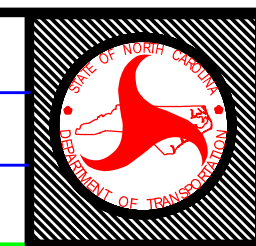
 NCDOT - Roadside Environmental Unit
 Aesthetic Engineering Section
 1557 Mail Service Center Raleigh NC 27699-1557
 Ph: 919-707-2920 Fax: 919-715-2554
http://www.ncdot.org/doh/operations/dp_chief_eng/roadside/

US 64 Edgemcombe Co Enhancement Plans
 Tarboro NC

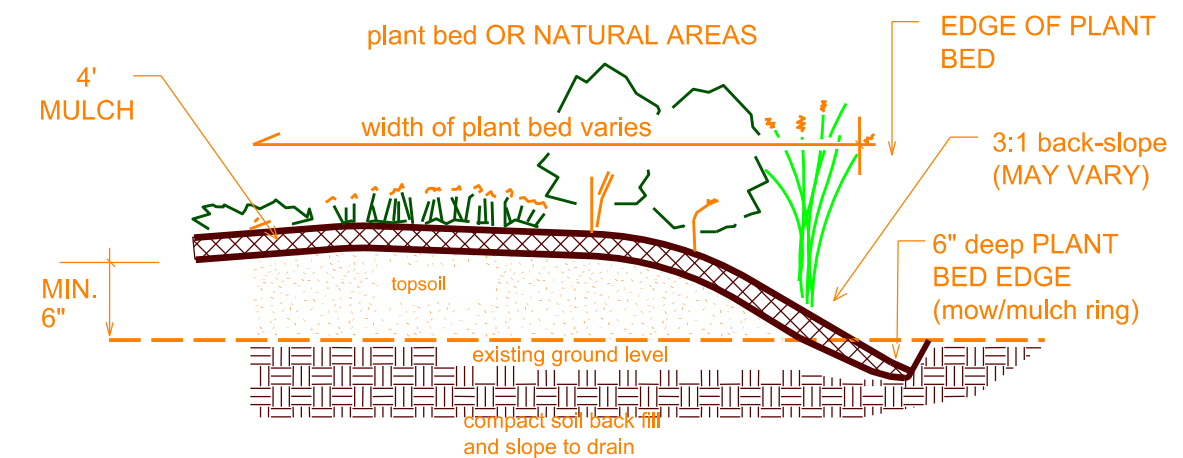
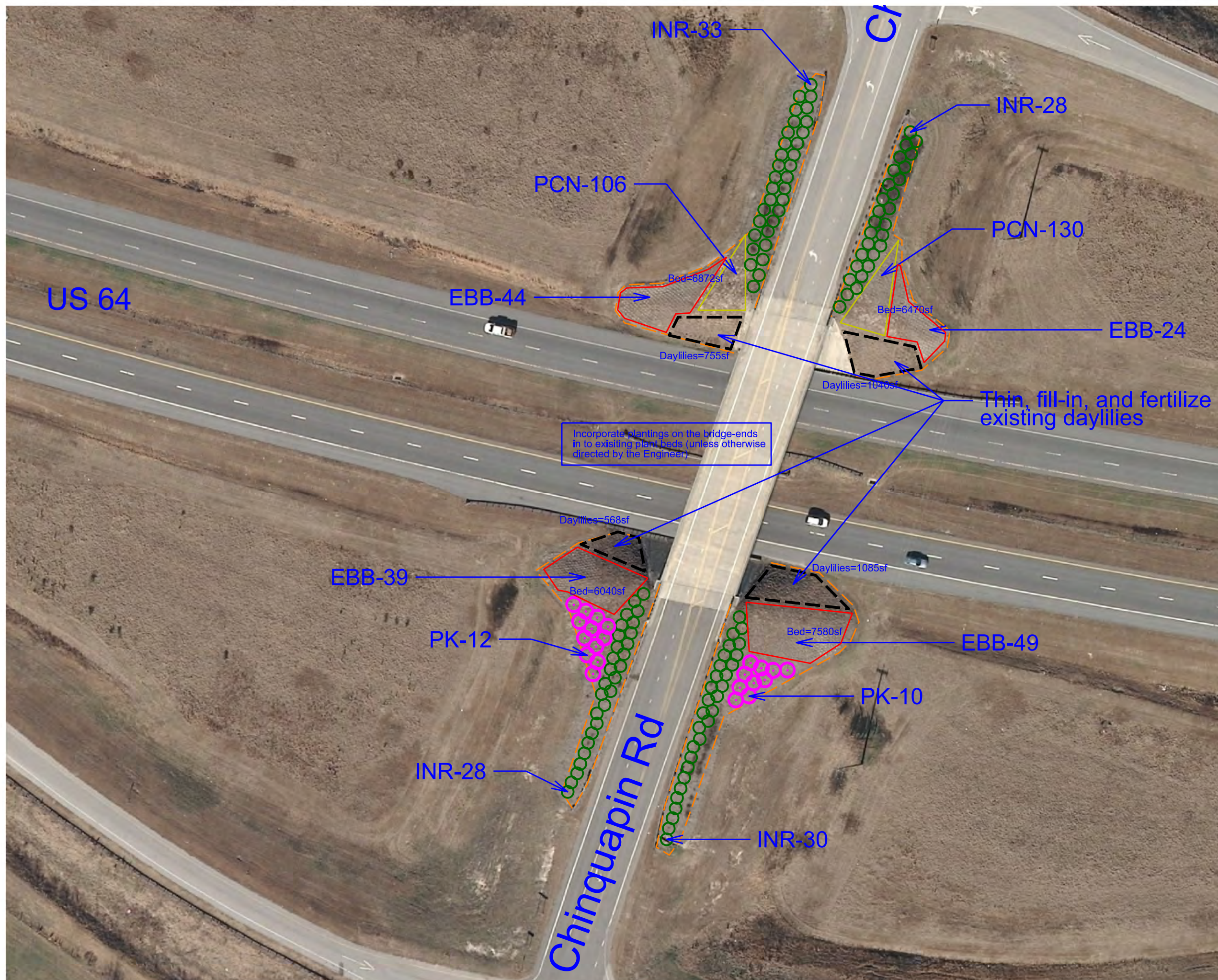
RN Kopersky

sheet description:
 prel. design date : Oct/2017
 checked by & date :
 final design date :

Landscape Enhancement

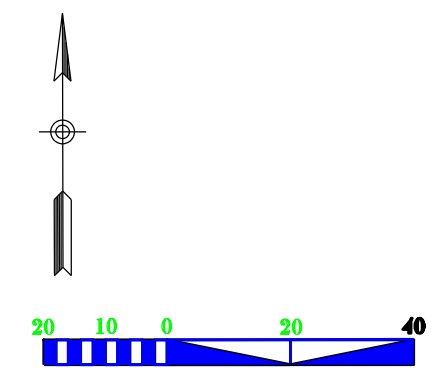


T.I.P. #
 WBS # 0000.00.0
 FED I.D. #
 sheet no : 3 total sheet no : 5

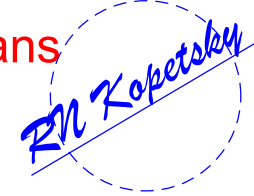


PLANT BED EDGE DETAIL

| Key | Common Name | Botanical Name | Spacing | Notes |
|-----|----------------------------|---------------------------------|-----------|-------------|
| INR | Nellie R Stevens Holly | Ilex x 'Nellie R. Stevens' | 8' O.C. | 6-8', B&B |
| PK | Kwanzan Cherry | Prunus serrulata 'Kwanzan' | 9' O.C. | 6-8', B&B |
| QN | Nuttall Oak | Quercus nuttali | as shown | 10-12', B&B |
| QP | Pin Oak | Quercus palustris | as shown | 8-10', B&B |
| TGG | Green Giant Arborvitae | Thuja 'Green Giant' | 9' O.C. | 6-8', B&B |
| EBB | Dwarf Burning Bush | Euonymus alata 'Compacta' | 7' O.C. | #3 Cont |
| IDY | Dwarf Yaupon Holly | Ilex vomitoria 'Nana' | 3' O.C. | #3 Cont |
| LR | Ruby Loropetalum | Loropetalum chinense 'Ruby' | 3.5' O.C. | #3 Cont |
| RKO | Red Knockout Rose | Rosa 'Radrazz' | 4' O.C. | #3 Cont |
| LCY | Chapel Hill Yellow Lantana | Lantana 'Chapel Hill' | 3' O.C. | #1 Cont |
| PCN | Cloud Nine Switchgrass | Panicum virgatum 'Cloud Nine' | 3' O.C. | #1 Cont |
| HBP | Buttered Popcorn Daylily | Hemerocallis 'Buttered Popcorn' | 30" O.C. | #1 Cont |

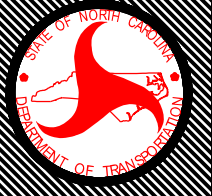


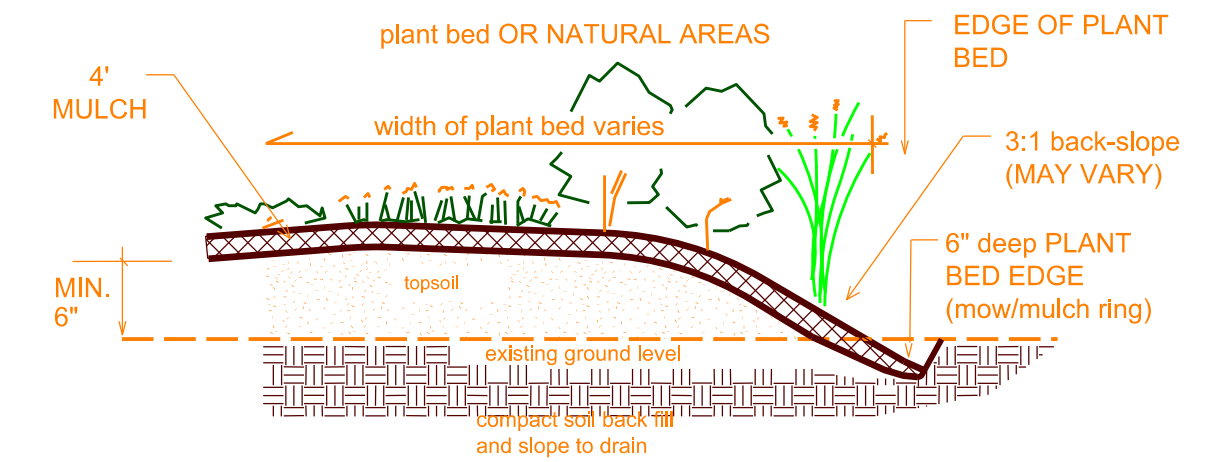
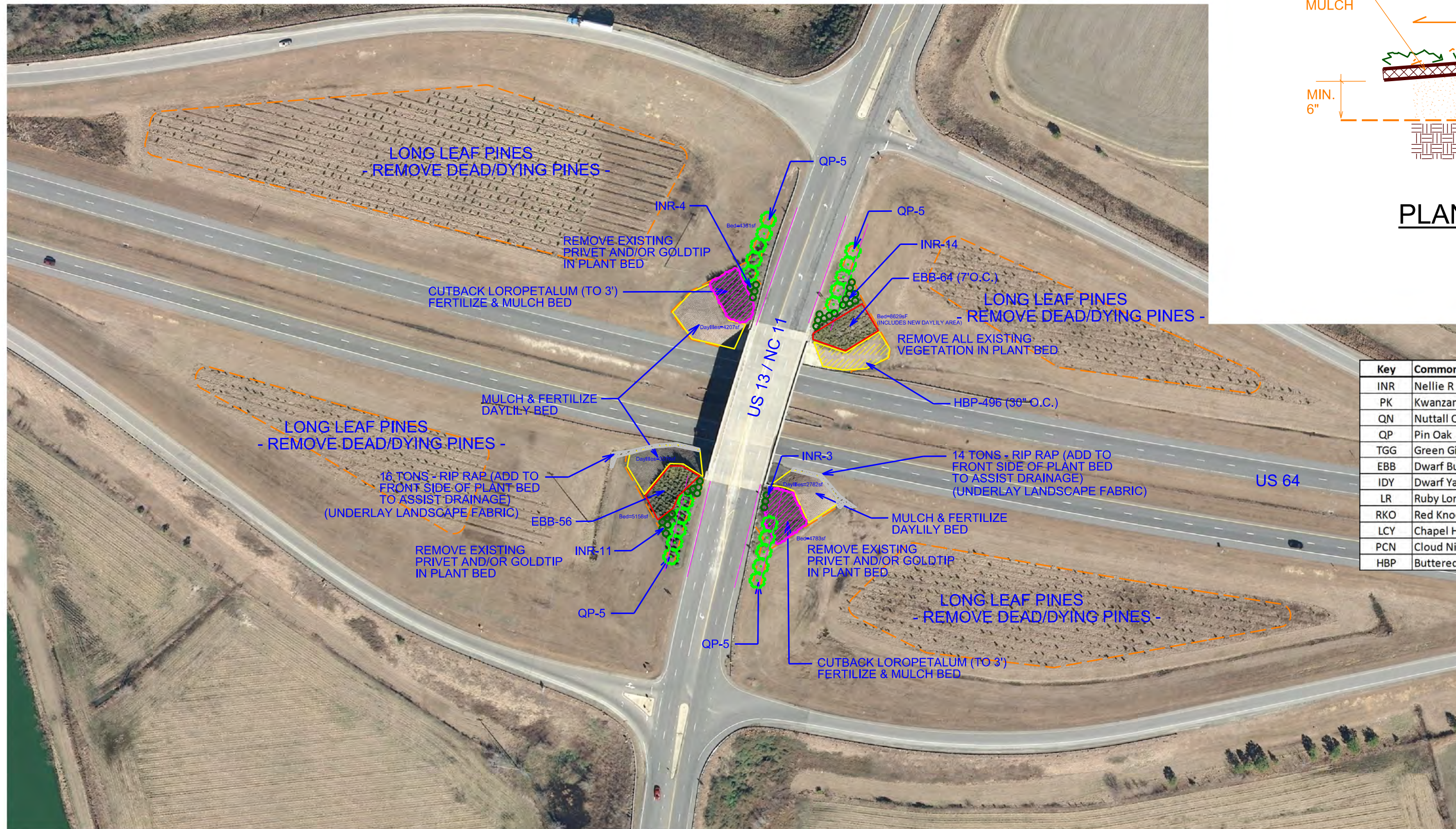

NCDOT - Roadside Environmental Unit
Aesthetic Engineering Section
 1557 Mail Service Center Raleigh NC 27699-1557
 Ph: 919-707-2920 Fax: 919-715-2554
http://www.ncdot.org/doh/operations/dp_chief_eng/roadside/

US 64 Edgecombe Co Enhancement Plans
Tarboro NC


sheet description:
 prel. design date : **Oct/2017**
 checked by & date :
 final design date :

Chinquapin Rd/ US 64 Interch
Landscape Enhancement



 T.I.P. #
 WBS # **0000.00.0**
 FED I.D. #
 sheet no : **4** total sheet no : **5**



PLANT BED EDGE DETAIL

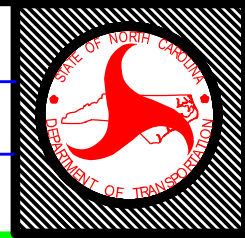
| Key | Common Name | Botanical Name | Spacing | Notes |
|-----|----------------------------|---------------------------------|-----------|-------------|
| INR | Nellie R Stevens Holly | Ilex x 'Nellie R. Stevens' | 8' O.C. | 6-8', B&B |
| PK | Kwanzan Cherry | Prunus serrulata 'Kwanzan' | 9' O.C. | 6-8', B&B |
| QN | Nuttall Oak | Quercus nuttali | as shown | 10-12', B&B |
| QP | Pin Oak | Quercus palustris | as shown | 8-10', B&B |
| TGG | Green Giant Arborvitae | Thuja 'Green Giant' | 9' O.C. | 6-8', B&B |
| EBB | Dwarf Burning Bush | Euonymus alata 'Compacta' | 7' O.C. | #3 Cont |
| IDY | Dwarf Yaupon Holly | Ilex vomitoria 'Nana' | 3' O.C. | #3 Cont |
| LR | Ruby Loropetalum | Loropetalum chinense 'Ruby' | 3.5' O.C. | #3 Cont |
| RKO | Red Knockout Rose | Rosa 'Radrazz' | 4' O.C. | #3 Cont |
| LCY | Chapel Hill Yellow Lantana | Lantana 'Chapel Hill' | 3' O.C. | #1 Cont |
| PCN | Cloud Nine Switchgrass | Panicum virgatum 'Cloud Nine' | 3' O.C. | #1 Cont |
| HBP | Buttered Popcorn Daylily | Hemerocallis 'Buttered Popcorn' | 30" O.C. | #1 Cont |

NCDOT - Roadside Environmental Unit
 Aesthetic Engineering Section
 1557 Mail Service Center Raleigh NC 27699-1557
 Ph: 919-707-2920 Fax: 919-715-2554
http://www.ncdot.org/doh/operations/dp_chief_eng/roadside/

US 64 Edgcombe Co Enhancement Plans
Tarboro NC


prel. design date : **Oct/2017**
 checked by & date :
 final design date :

US 13/ US 64 Interchange
Landscape Enhancement



T.I.P. #
 WBS # **0000.00.0**
 FED I.D. #
 sheet no : **5** total sheet no : **5**